

# DISCOVER KABUKI

かぶき  
歌舞伎入門

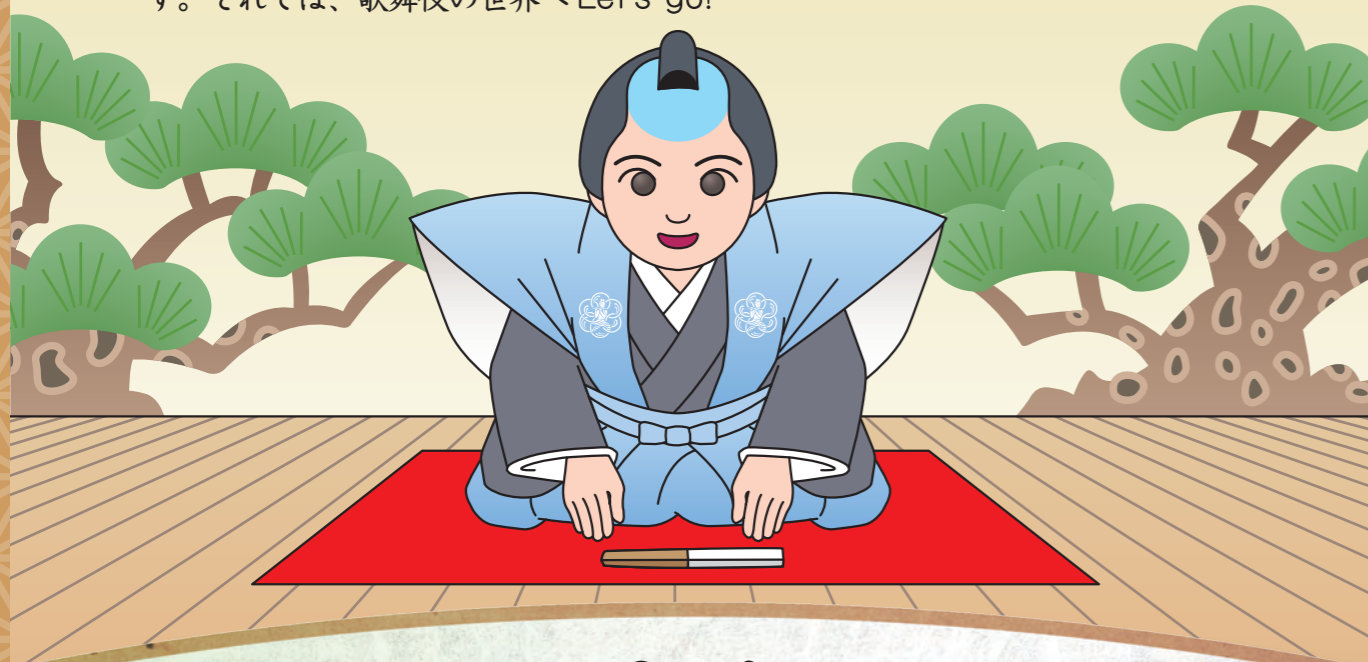
2016年度版「狐忠信の物語」





## はじめに

みなさん、歌舞伎の世界へようこそ。歌舞伎は能楽や文楽と並び、ユネスコの「人類の無形文化遺産の代表的な一覧表」に記載された、日本が世界に誇るすばらしい文化遺産です。400年以上の長い歴史の中で、伝統を守るだけでなく、それぞれの時代で常に磨かれ、新たな工夫も取り入れながら、現在も多くの人に愛され続けており、日本だけでなく、世界の人々をも魅了しています。歌舞伎の海外公演では、ことばや文化が異なる人たちが感動の涙を流し、大きな拍手を送ってくれます。みなさんがこの英語教材を使って歌舞伎を学び、将来、いろいろな国の人たちと、さまざまな日本の伝統文化について話せるようになれば、幸いです。それでは、歌舞伎の世界へ Let's go!



## 目次

Scene 1	What's Kabuki? .....	2
Scene 2	Let's go to see Kabuki! .....	3
Scene 3	Welcome to the <i>National Theatre</i> . .....	4
Scene 4	Tell us, Kurogo-chan! .....	5
Scene 5	The amazing Kabuki stage! .....	7
Scene 6	The tale of Tadanobu the Fox .....	9
Scene 7	Thank you, Kurogo-chan! .....	14
	◆ Information about performances .....	14

## Scene 1 What's Kabuki?



Hey, Yumi, look at this poster.



It's a Kabuki poster.



It's really beautiful.

What's Kabuki?



Kabuki is a kind of Japanese traditional theater from the Edo period (1603-1867).

But I've never seen Kabuki.



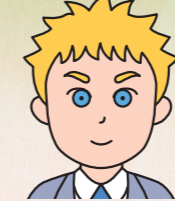
## 登場する人物の紹介

ユミ (Yumi)



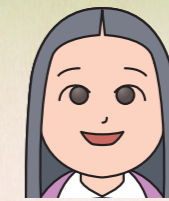
中学校に通う日本人の女の子。中学2年生。

マイク (Mike)



ユミの同級生。アメリカ人の男の子。中学2年生。

上田先生  
(Ms. Ueda)



ユミとマイクの担任で歌舞伎が大好き。

くろごちゃん  
(Kurogo-chan)



国立劇場のマスコットキャラクター。


「くろご (黒衣)」とは、黒い服と頭巾を身につけ、舞台において、道具の出し入れ、登場人物の補助などを行う人のこと。



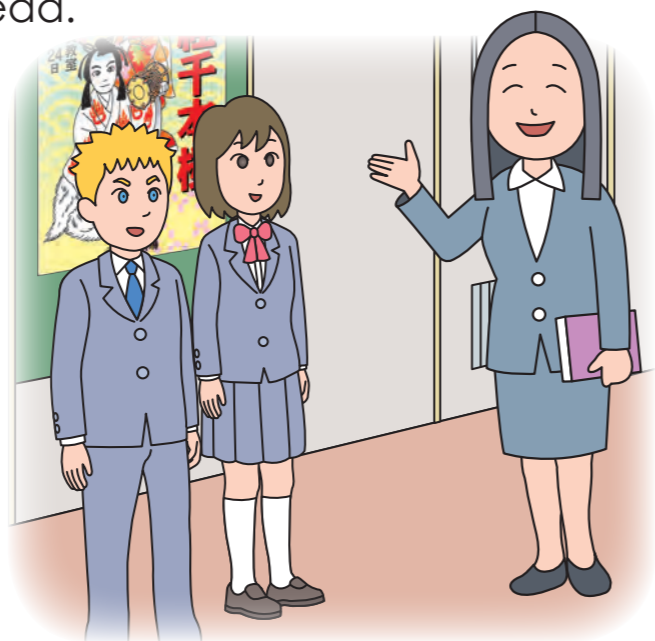
## Scene 2 Let's go to see Kabuki!

 Good morning, Ms. Ueda.


 Good morning, Yumi.



 Have you ever seen Kabuki?


 Yes, Kabuki is really fun.

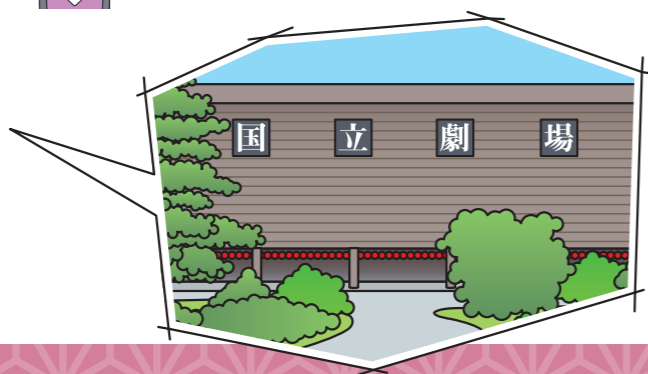


  Really?


 If you are interested in Kabuki, why don't we go and see it?

  Yes! Please take us to the theater!

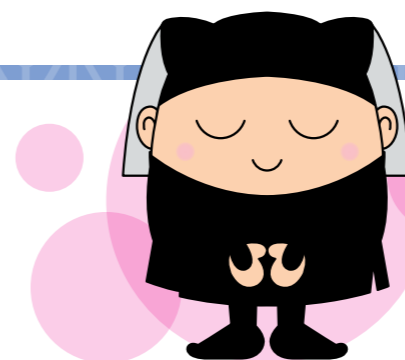
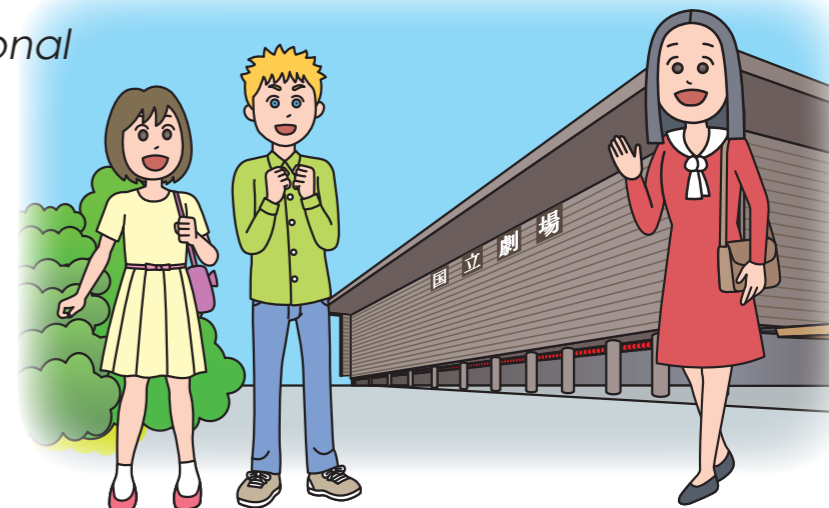
 OK, let's go to the *National Theatre*.



## Scene 3 Welcome to the National Theatre.

 This is the *National Theatre*.

Let's go inside.





Welcome to the *National Theatre*!

  Hello!

 This is Kurogo-chan.

He is the mascot of the *National Theatre*.

He will tell us about Kabuki.


  Nice to meet you, Kurogo-chan.


 Nice to meet you, too.






## Scene 4 Tell us, Kurogo-chan!

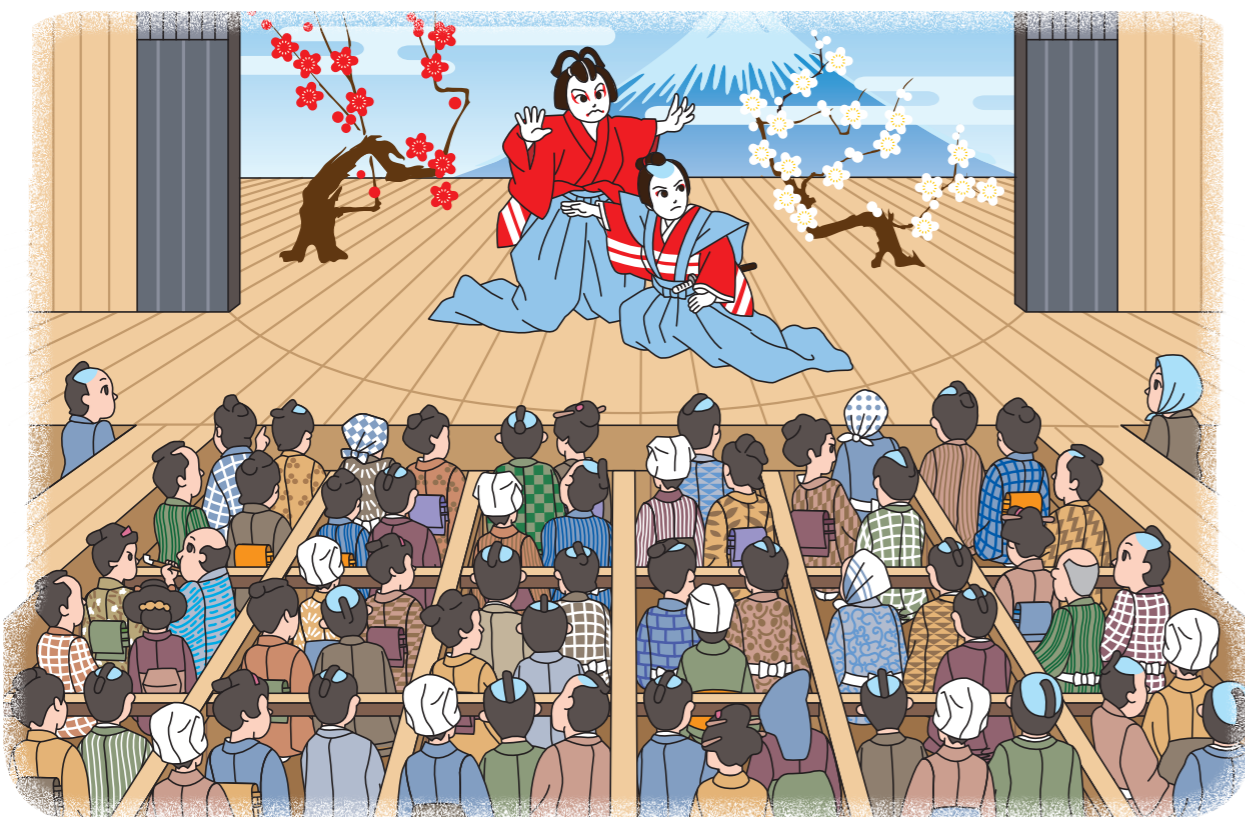
 Kabuki is a kind of Japanese traditional theater which has been performed for over 400 years.

 For people in the Edo period without TV and cinema, Kabuki was the best form of entertainment.

 Oh, that sounds difficult.

 Not at all.

Kabuki has many ways to make it easy for anyone to understand.




江戸時代の劇場の様子

 For example, *Kumadori* is one of the styles of make-up.



The make-up exaggerates the expressions on the face and the colors indicate the kind of character.

 Costumes and wigs immediately show what kind of character this is.

  I see!



### Column 1 隈取

The lines of *Kumadori* are said to represent blood vessels and muscles.

Red indicates a hero. Blue is for a high ranking villain.

